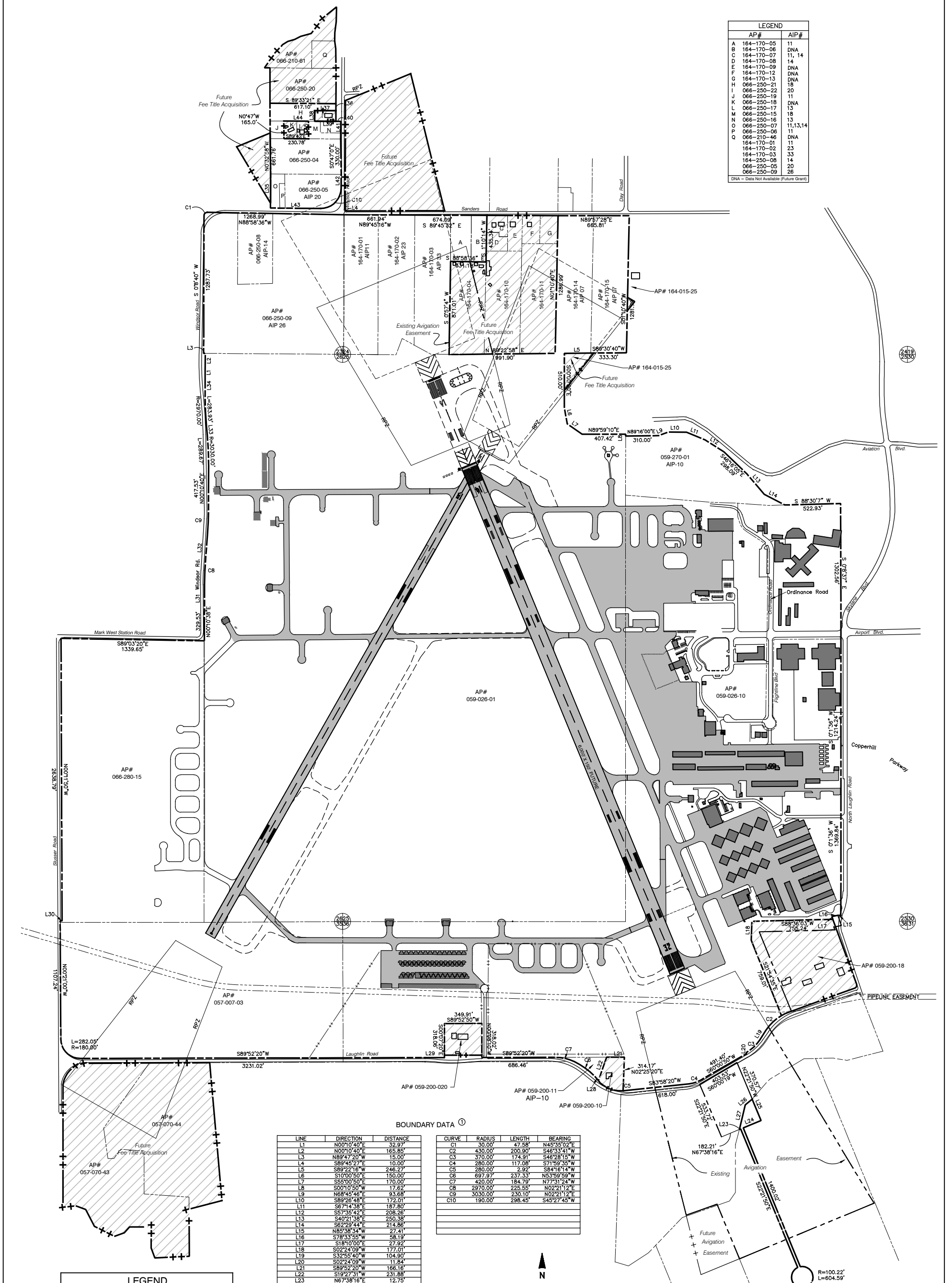


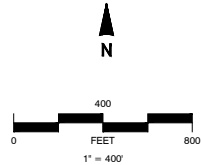
LEGEND		
AP#	AIP#	
A	164-170-05	11
B	164-170-06	DNA
C	164-170-07	11, 14
D	164-170-08	14
E	164-170-09	DNA
F	164-170-12	DNA
G	164-170-13	DNA
H	066-250-21	18
I	066-250-22	20
J	066-250-19	11
K	066-250-18	DNA
L	066-250-17	13
M	066-250-15	18
N	066-250-16	13
P	066-250-07	11,13,14
Q	066-210-46	DNA
	164-170-01	11
	164-170-02	23
	164-170-03	33
	164-250-08	14
	066-250-05	20
	066-250-09	26
DNA = Data Not Available (Future Grant)		



BOUNDARY DATA

LINE	DIRECTION	DISTANCE
L1	N00°10'40"E	32.97'
L2	N00°10'40"E	165.85'
L3	N89°47'20"W	15.00'
L4	S89°45'27"E	10.00'
L5	S89°22'16"W	246.27'
L6	S10°00'50"E	150.00'
L7	S55°00'50"E	170.00'
L8	S05°10'50"W	17.62'
L9	N85°43'46"E	83.66'
L10	S89°26'48"E	172.01'
L11	S67°14'38"E	187.80'
L12	S57°35'42"E	208.26'
L13	S05°10'50"W	17.62'
L14	S62°29'44"E	214.86'
L15	N85°38'34"W	27.41'
L16	S78°33'55"W	58.19'
L17	S18°10'00"E	27.92'
L18	S02°24'09"W	177.01'
L19	S32°55'40"W	104.90'
L20	S02°24'09"W	11.84'
L21	S89°52'20"W	166.16'
L22	S18°27'31"W	231.88'
L23	N67°38'16"E	12.75'
L24	N67°38'16"E	180.00'
L25	N22°21'50"W	216.74'
L26	S89°22'16"W	84.57'
L27	S13°10'53"W	235.68'
L28	S39°36'32"E	50.80'
L29	S89°52'20"W	174.53'
L30	S05°10'50"W	17.62'
L31	N00°10'40"E	200.00'
L32	N04°31'44"E	233.40'
L33	N05°17'59"W	79.66'
L34	N01°10'00"E	200.00'
L35	N00°08'40"E	318.13'
L36	S00°08'40"W	65.00'
L37	N89°49'00"W	198.01'
L38	S02°21'50"W	99.69'
L39	S89°43'34"E	198.40'
L40	S89°33'21"E	46.49'
L41	S00°27'45"W	165.08'
L42	S02°21'50"W	130.00'
L43	N89°43'21"W	468.23'
L44	S89°43'34"E	230.78'
L45	S00°47'00"E	165.11'

CURVE	RADIUS	LENGTH	BEARING
C1	30.00'	47.58'	N45°35'02"E
C2	430.00'	200.90'	S46°33'41"W
C3	370.00'	174.91'	S46°28'15"W
C4	280.00'	117.08'	S71°53'35"W
C5	280.00'	2.92'	S84°18'14"W
C6	697.97'	237.33'	S53°59'59"W
C7	420.00'	184.79'	N77°31'24"W
C8	2970.00'	225.55'	N02°21'12"E
C9	3030.00'	230.10'	N02°21'12"E
C10	190.00'	298.45'	S45°27'45"W



LEGEND	
AIRPORT PROPERTY LINE - EXISTING	—————
PIPELINE EASEMENT - EXISTING	- - - - -
AVIGATION EASEMENT - EXISTING	- · - · -
PARCEL LINES	—————
FEE TITLE ACQUISITION - PROPOSED	—————
AIRFIELD PAVEMENT - EXISTING	▨▨▨▨▨
AIRFIELD PAVEMENT - PROPOSED	▨▨▨▨▨

PROPERTY BOUNDARY DATA DEPICTED ON THIS DRAWING HAS BEEN OBTAINED FROM SEVERAL SOURCES. RELIABLE, SURVEY QUALITY, DATA IS AVAILABLE FOR MOST OF THE EASTERN PORTION OF THE BOUNDARY, BUT GENERALLY NOT FOR OTHER AREAS. THE INDICATED BOUNDARY DATA FOR THE LATTER AREAS MERELY REFLECT THE LINES AS SHOWN ON THE DRAWING AND SHOULD NOT BE TAKEN AS PRECISE.

2	Airport Master Plan Update	MEAD & HUNT, INC.	11/07
1	Update for Property Acquisitions	SMA	01/06
NO.	REVISION	SPONSOR	DATE
CHARLES M. SCHULZ - SONOMA COUNTY AIRPORT SANTA ROSA, CALIFORNIA EXHIBIT A PROPERTY MAP			
		133 Aviation Boulevard, Suite 100 Santa Rosa, California 95403 (707) 526-5010 Fax (707) 526-9721 www.meadhunt.com	
		County of Sonoma	
DESIGN:	MM	DRAWN:	TE
DATE:	August 2009	SHEET	4 OF 8