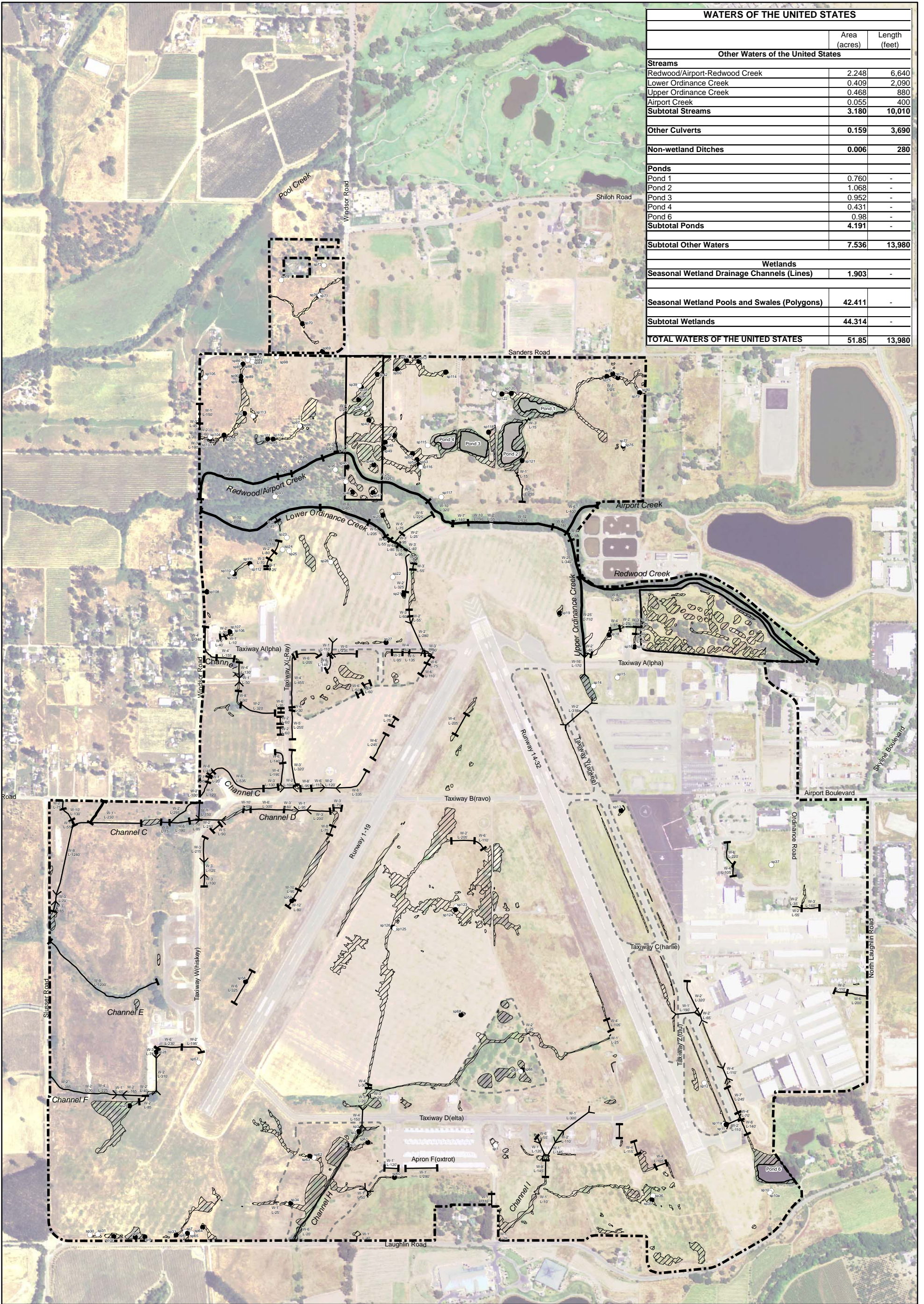
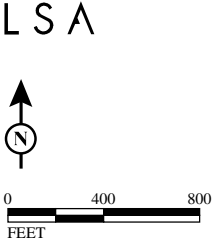


## **APPENDIX C**

### **CORPS OF ENGINEERS VERIFIED WETLAND DELINEATION MAP**



WATERS OF THE UNITED STATES		
	Area (acres)	Length (feet)
<b>Other Waters of the United States</b>		
<b>Streams</b>		
Redwood/Airport-Redwood Creek	2.248	6,640
Lower Ordinance Creek	0.409	2,090
Upper Ordinance Creek	0.468	880
Airport Creek	0.055	400
<b>Subtotal Streams</b>	<b>3.180</b>	<b>10,010</b>
<b>Other Culverts</b>	<b>0.159</b>	<b>3,690</b>
<b>Non-wetland Ditches</b>		
	<b>0.006</b>	<b>280</b>
<b>Ponds</b>		
Pond 1	0.760	-
Pond 2	1.068	-
Pond 3	0.952	-
Pond 4	0.431	-
Pond 6	0.98	-
<b>Subtotal Ponds</b>	<b>4.191</b>	<b>-</b>
<b>Subtotal Other Waters</b>	<b>7.536</b>	<b>13,980</b>
<b>Wetlands</b>		
<b>Seasonal Wetland Drainage Channels (Lines)</b>	<b>1.903</b>	<b>-</b>
<b>Seasonal Wetland Pools and Swales (Polygons)</b>	<b>42.411</b>	<b>-</b>
<b>Subtotal Wetlands</b>	<b>44.314</b>	<b>-</b>
<b>TOTAL WATERS OF THE UNITED STATES</b>	<b>51.85</b>	<b>13,980</b>



- Other Features**
- Study Site
  - sp1 Wetland Sample Point
  - sp2 Non-wetland Sample Point
- Jurisdictional Features**
- Seasonal Wetland
  - Pond/Reservoir
  - Seasonal Wetland Ditch Segment
  - Other Waters - Stream/Ditch Segment
  - Culvert

Charles M. Schulz  
Sonoma County Airport  
Biological Assessment

Waters of the United States  
(Field Verified by the Corps March-June 2010)

Source: Aerial Imagery from the United States Department of Agriculture (NAIP 2005)  
I:\RSQ0901\GIS\Maps\NEPA BA\Appendix\_Waters of the US.mxd (5/26/2011)