

Figure 1. Airport Location (Original Source: November 2007 Draft Final AMP, Mead & Hunt)

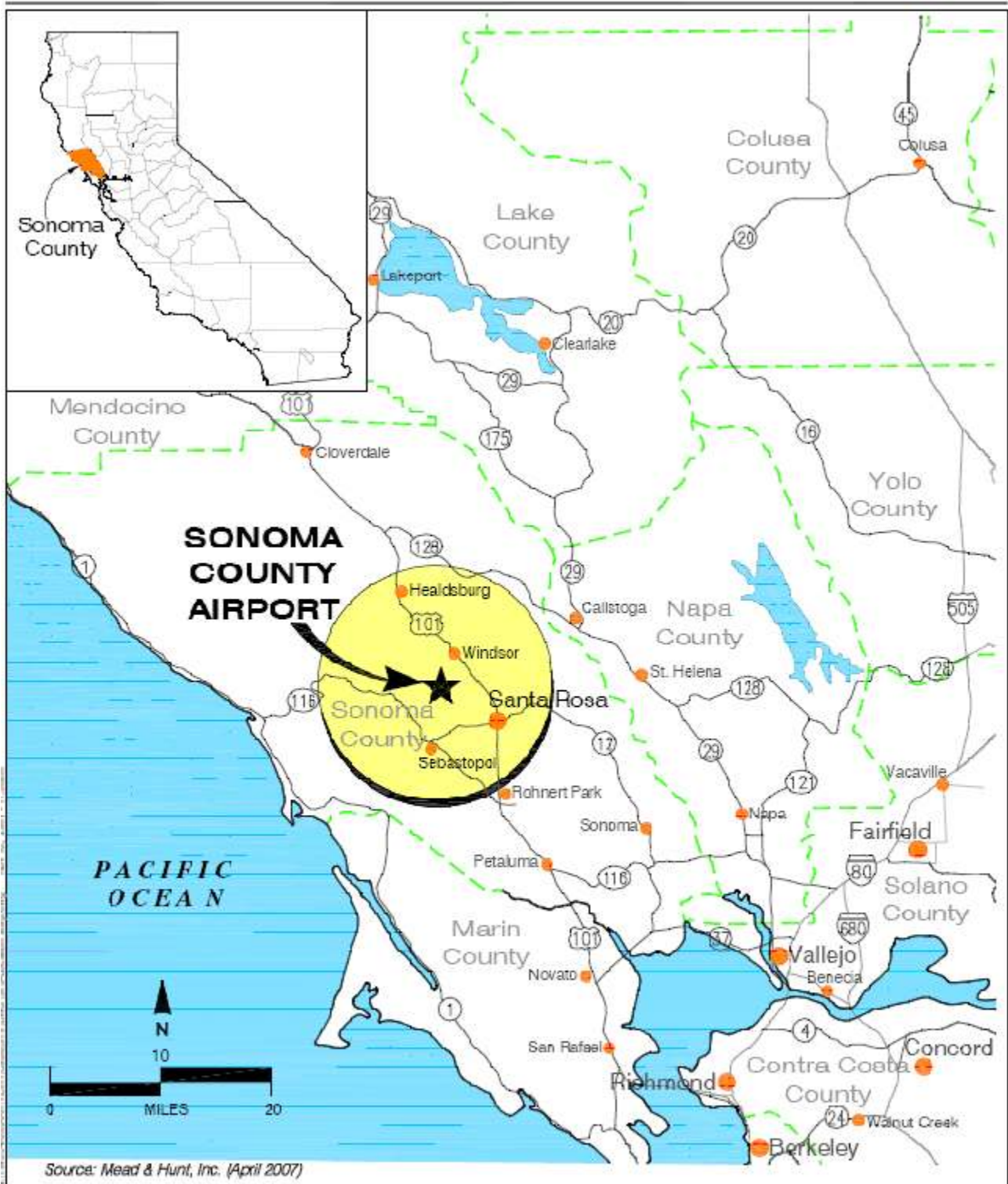


Figure 1A

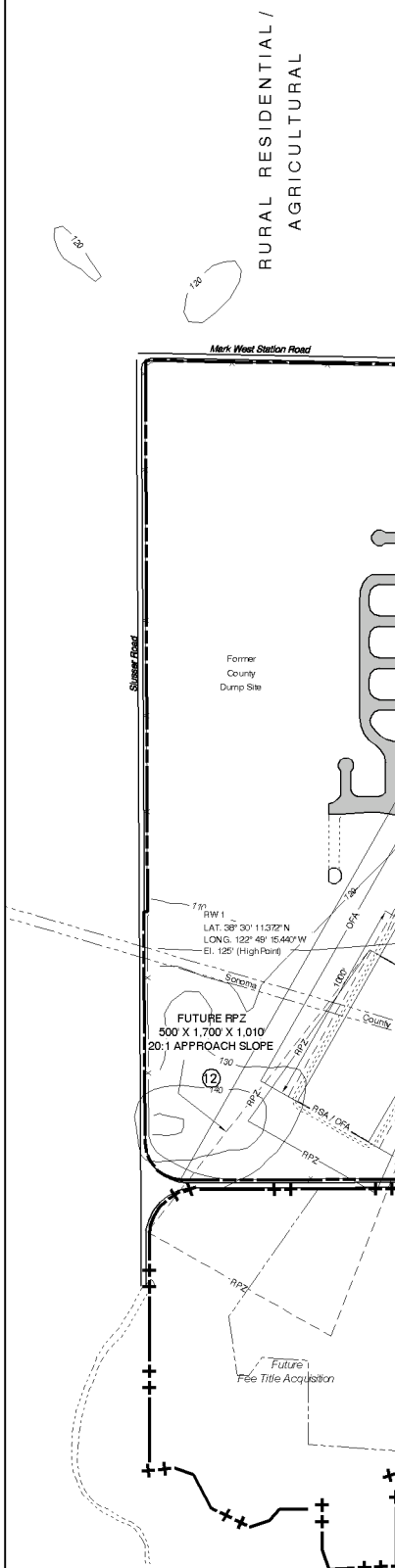
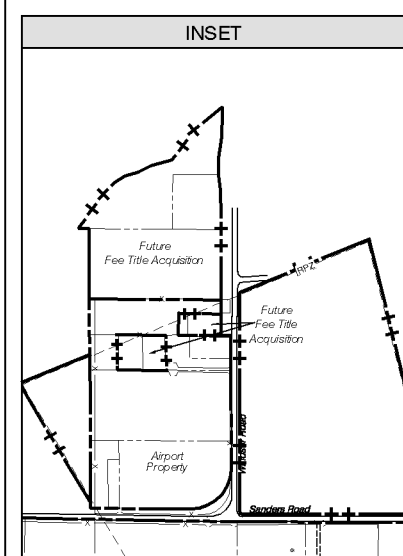
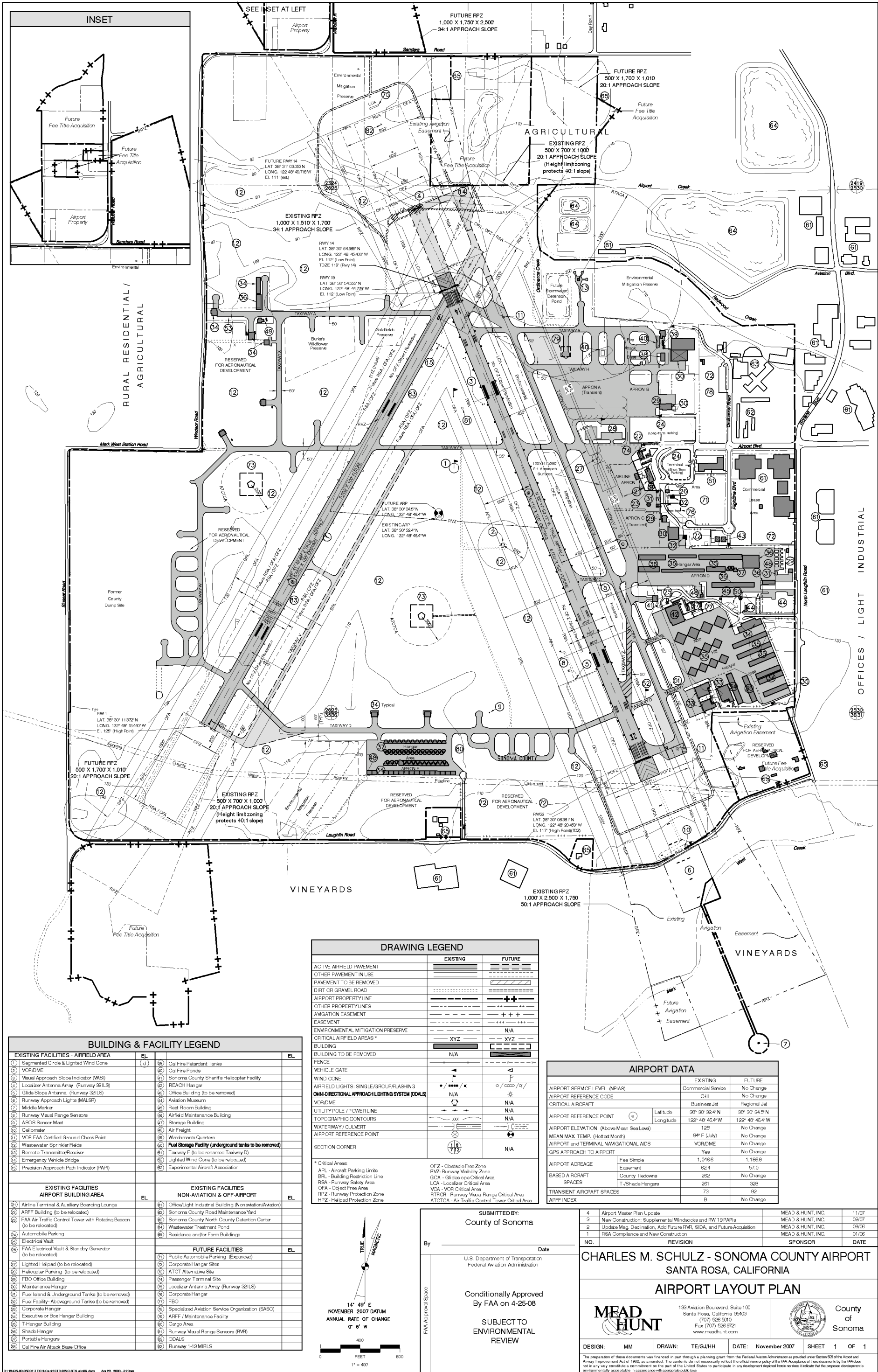
**Location Map**  
Sonoma County Airport



**AERIAL MAP  
CHARLES M. SCHULZ - SONOMA COUNTY AIRPORT  
AIRPORT MASTER PLAN**

Source: Sonoma County Department of Permit and Resource Management, 2008. CMA

**FIGURE 2**



BUILDING & FACILITY LEGEND			
EXISTING FACILITIES - AIRFIELD AREA		EL	EL
(1) Segmented Circle & Lighted Wind Cone	(26) Cal Fire Retardant Tanks		
(2) VOR/DME	(27) Cal Fire Ponds		
(3) Visual Approach Slope Indicator (VASI)	(28) Sonoma County Sheriff's Helicopter Facility		
(4) Localizer Antenna Array (Runway 32/ILS)	(29) REACH Hangar		
(5) Glide Slope Antenna (Runway 32/ILS)	(30) Office Building (to be removed)		
(6) Runway Approach Light (MALSR)	(31) Aviation Museum		
(7) Middle Marker	(32) Rest Room Building		
(8) Runway Visual Range Sensors	(33) Airfield Maintenance Building		
(9) ASCS Sensor Mast	(34) Storage Building		
(10) Calometer	(35) Air Freight		
(11) VOR FAA Certified Ground Check Point	(36) Watchmen's Quarters		
(12) Wastewater Sprinkler Fields	(37) Fuel Storage Facility (underground tanks to be removed)		
(13) Remote Transmitter Receiver	(38) Taxiway F (to be renamed Taxiway D)		
(14) Emergency Vehicle Bridge	(39) Lighted Wind Cone (to be relocated)		
(15) Precision Approach Path Indicator (PAPI)	(40) Experimental Aircraft Association		
EXISTING FACILITIES - AIRPORT BUILDING AREA		EL	EL
(21) Airline Terminal & Auxiliary Boarding Lounge	(61) Office/Light Industrial Building (Non-aviation/Aviation)		
(22) ARFF Building (to be relocated)	(62) Sonoma County Road Maintenance Yard		
(23) FAA Air Traffic Control Tower with Rotating Beacon (to be relocated)	(63) Sonoma County North County Detention Center		
(24) Automobile Parking	(64) Wastewater Treatment Pond		
(25) Electrical Vault	(65) Residence and/or Farm Buildings		
(26) FAA Electrical Vault & Standby Generator (to be relocated)			
(27) Lighted Helipad (to be relocated)	FUTURE FACILITIES		EL
(28) Helicopter Parking (to be relocated)	(71) Public Automobile Parking (Expanded)		
(29) FBO Office Building	(72) Corporate Hangar Site		
(30) Maintenance Hangar	(73) ATCT Alternative Site		
(31) Fuel Island & Underground Tanks (to be removed)	(74) Passenger Terminal Site		
(32) Fuel Facility - Aboveground Tanks (to be removed)	(75) Localizer Antenna Array (Runway 32/ILS)		
(33) Corporate Hangar	(76) Corporate Hangar		
(34) Executive or Box Hangar Building	(77) FBO		
(35) T-Hangar Building	(78) Specialized Aviation Service Organization (SASO)		
(36) Shade Hangar	(79) ARFF / Maintenance Facility		
(37) Portable Hangar	(80) Cargo Area		
(38) Cal Fire Air Attack Base Office	(81) Runway Visual Range Sensors (RVR)		
	(82) Cargo Area		
	(83) Runway 1-19 MIRLS		

DRAWING LEGEND		
	EXISTING	FUTURE
ACTIVE AIRFIELD PAVEMENT	[Symbol]	[Symbol]
OTHER PAVEMENT IN USE	[Symbol]	[Symbol]
PAVEMENT TO BE REMOVED	[Symbol]	[Symbol]
DIRT OR GRAVEL ROAD	[Symbol]	[Symbol]
AIRPORT PROPERTY LINE	[Symbol]	[Symbol]
OTHER PROPERTY LINE	[Symbol]	[Symbol]
AVIGATION EASEMENT	[Symbol]	[Symbol]
EASEMENT	[Symbol]	[Symbol]
ENVIRONMENTAL MITIGATION PRESERVE	[Symbol]	[Symbol]
CRITICAL AIRFIELD AREAS *	[Symbol]	[Symbol]
BUILDING TO BE REMOVED	[Symbol]	[Symbol]
FENCE	[Symbol]	[Symbol]
VEHICLE GATE	[Symbol]	[Symbol]
WIND CONE	[Symbol]	[Symbol]
AIRFIELD LIGHTS: SINGLE/GROUP/FLASHING	[Symbol]	[Symbol]
OMNI-DIRECTIONAL APPROACH LIGHTING SYSTEM (ODALS)	[Symbol]	[Symbol]
VOR/DME	[Symbol]	[Symbol]
UTILITY POLE / POWER LINE	[Symbol]	[Symbol]
TOPOGRAPHIC CONTOURS	[Symbol]	[Symbol]
WATERWAY / CULVERT	[Symbol]	[Symbol]
AIRPORT REFERENCE POINT	[Symbol]	[Symbol]
SECTION CORNER	[Symbol]	[Symbol]

\* Critical Areas:  
 APL - Aircraft Parking Limits  
 BRL - Building Restriction Line  
 RSA - Runway Safety Area  
 OFA - Object Free Area  
 RPZ - Runway Protection Zone  
 HPZ - Helipad Protection Zone  
 OFZ - Obstacle Free Zone  
 RVZ - Runway Visibility Zone  
 GCA - Glide Slope Critical Area  
 LOA - Localizer Critical Area  
 VCA - VOR Critical Area  
 RTRCR - Runway Taxiway Critical Area  
 ATCTCA - Air Traffic Control Tower Critical Area

SUBMITTED BY:  
 County of Sonoma  
 U.S. Department of Transportation  
 Federal Aviation Administration  
 Conditionally Approved  
 By FAA on 4-25-08  
 SUBJECT TO ENVIRONMENTAL REVIEW

AIRPORT DATA		
	EXISTING	FUTURE
AIRPORT SERVICE LEVEL (NPIAS)	Commercial Service	No Change
AIRPORT REFERENCE CODE	CIII	No Change
CRITICAL AIRCRAFT	Business Jet	Regional Jet
AIRPORT REFERENCE POINT	Latitude 38° 30' 34.2\"/>	
AIRPORT ELEVATION (Above Mean Sea Level)	125'	No Change
MEAN MAX TEMP. (Hottest Month)	84°F (July)	No Change
AIRPORT AND TERMINAL NAVIGATIONAL AIDS	VOR/DME	No Change
GPS APPROACH TO AIRPORT	Yes	No Change
AIRPORT ACREAGE	Fee Simple 1,046.6 Easement 62.4	1,195.0 57.0
BASED AIRCRAFT	County Trademas 262	No Change
SPACES	T/Shadow Hangars 261	269
TRANSIENT AIRCRAFT SPACES	73	82
ARFF INDEX	B	No Change

4 Airport Master Plan Update  
 3 New Construction: Supplemental Windsocks and RW 19 PAPIs  
 2 Update Mag. Declination, Add Future RVR, SDA, and Future Acquisition  
 1 RSA Compliance and New Construction

NO.	REVISION	SPONSOR	DATE
4	Airport Master Plan Update	MEAD & HUNT, INC.	11/07
3	New Construction: Supplemental Windsocks and RW 19 PAPIs	MEAD & HUNT, INC.	02/07
2	Update Mag. Declination, Add Future RVR, SDA, and Future Acquisition	MEAD & HUNT, INC.	08/06
1	RSA Compliance and New Construction	MEAD & HUNT, INC.	01/06

**CHARLES M. SCHULZ - SONOMA COUNTY AIRPORT**  
 SANTA ROSA, CALIFORNIA  
**AIRPORT LAYOUT PLAN**  
**MEAD HUNT**  
 133 Aviation Boulevard, Suite 100  
 Santa Rosa, California 95403  
 (707) 526-6010  
 Fax (707) 526-9721  
 www.meadhunt.com  
 County of Sonoma  
 DESIGN: MM DRAWN: TE/GJ/HH DATE: November 2007 SHEET 1 OF 1

Figure 3

Table 1. Airport Profile (Original Source: November 2007 Draft Final AMP, Mead & Hunt)

<b>Table 1-2 Airport Profile</b>	
<p><b>MAJOR FEATURES</b></p> <p><b>Property</b></p> <ul style="list-style-type: none"> <li>▶ Existing: 1,046.6 acres</li> <li>▶ Easements: 62.4 acres</li> <li>▶ Property encompasses airfield, building area, and most portions of runway protection zones.</li> </ul> <p><b>Airfield</b></p> <ul style="list-style-type: none"> <li>▶ Runway 14-32: 5,115 feet long, 150 feet wide; asphalt</li> <li>▶ Runway 1-19: 5,002 feet long, 100 feet wide; asphalt</li> <li>▶ Runway Lighting (14-32): High Intensity</li> <li>▶ Prior permission required for aircraft over 95,000 pounds</li> </ul> <p><b>Navigational Aids</b></p> <ul style="list-style-type: none"> <li>▶ Airport: <ul style="list-style-type: none"> <li>▶ Segmented circle &amp; lighted wind cone</li> <li>▶ Rotating Beacon</li> <li>▶ Pilot Controlled Runway Lights (when tower closed), Runway 14-32</li> <li>▶ Automated Surface Observation System (ASOS)</li> </ul> </li> <li>▶ Runways: <ul style="list-style-type: none"> <li>▶ Runway 32: Medium Intensity Approach Lighting System with RAILs</li> <li>▶ Runway 14: Runway End Identifier Lights, Visual Approach Slope Indicator (VASI)</li> <li>▶ Runway 19: PAPI</li> </ul> </li> </ul> <p><b>Building Area</b></p> <ul style="list-style-type: none"> <li>▶ Majority of facilities located on east side of Airport</li> <li>▶ Aircraft Parking Capacity <ul style="list-style-type: none"> <li>▶ T-/Shade Hangars: 261</li> <li>▶ County Tiedowns: 262</li> <li>▶ Transient Tiedowns: 73</li> </ul> </li> <li>▶ Aviation-Related Facilities <ul style="list-style-type: none"> <li>▶ Airline Terminal &amp; Boarding Lounge</li> <li>▶ CDF Sonoma County Air Attack Base</li> <li>▶ Sonoma County Sheriff's Helicopter Center</li> <li>▶ Redwood Empire Air Care Helicopter (Reach) Facility</li> <li>▶ Aircraft Parking and Storage</li> <li>▶ Above and Underground Fuel</li> <li>▶ Aviation Museum</li> </ul> </li> <li>▶ Non-Aviation Facilities <ul style="list-style-type: none"> <li>▶ Automobile Parking</li> <li>▶ Car Rental</li> <li>▶ Industrial Buildings</li> </ul> </li> </ul>	<p><b>AIRPORT SITE AND ENVIRONS</b></p> <p><b>Topography</b></p> <ul style="list-style-type: none"> <li>▶ Airport elevation: 125 ft. MSL</li> <li>▶ Terrain: <ul style="list-style-type: none"> <li>▶ On airport: Terrain ranges from 80 ft. to 125 ft.</li> <li>▶ Off airport: Rising terrain 3 miles northwest to 500 ft.</li> </ul> </li> </ul> <p><b>Access</b></p> <ul style="list-style-type: none"> <li>▶ Direct: Airport Boulevard east side of airport</li> <li>▶ U.S. Highway 101: 2 miles east</li> <li>▶ Airport 7 miles northwest of the City of Santa Rosa</li> </ul> <p><b>Jurisdictions</b></p> <ul style="list-style-type: none"> <li>▶ Airport within unincorporated portion of Sonoma County</li> </ul> <p><b>Nearby Land Uses</b></p> <ul style="list-style-type: none"> <li>▶ East: Agriculture/Light Industrial</li> <li>▶ North and West: Rural Residential/Agricultural</li> <li>▶ South: Vineyard</li> </ul>
<p><b>MANAGEMENT AND SERVICES</b></p> <p><b>Management</b></p> <ul style="list-style-type: none"> <li>▶ Airport Management and Maintenance: <ul style="list-style-type: none"> <li>▶ County of Sonoma Transportation &amp; Public Works Dept.</li> <li>▶ Airport Facilities Manager and on-site staff of nine</li> </ul> </li> </ul> <p><b>Fixed Base Operations (FBO) Services</b></p> <ul style="list-style-type: none"> <li>▶ Several FBOs are located at the airport. Services include: aircraft fuel, parking maintenance, avionics, flight training, aircraft rental, charter, and car rental.</li> <li>▶ Fuel: 100LL/Jet- self-service cardlock system &amp; truck</li> </ul> <p><b>Emergency and Security</b></p> <ul style="list-style-type: none"> <li>▶ Fire Protection: <ul style="list-style-type: none"> <li>▶ CDF (on-site)</li> <li>▶ ARFF (on-site)</li> <li>▶ Rincon Valley Fire Department</li> </ul> </li> <li>▶ Police: <ul style="list-style-type: none"> <li>▶ Patrolled by Sonoma County Sheriff's Dept. on random basis</li> </ul> </li> </ul>	<p><b>AIR TRAFFIC PROCEDURES</b></p> <p><b>Traffic Patterns</b></p> <ul style="list-style-type: none"> <li>▶ Runway 14-32: left traffic</li> <li>▶ Runway 1-19: left traffic</li> <li>▶ Pattern Altitudes <ul style="list-style-type: none"> <li>▶ Light aircraft: 1,125 ft. (MSL), (1,000 ft. AGL)</li> <li>▶ Heavy aircraft: 1,625 ft. (MSL), (1,500 ft. AGL)</li> </ul> </li> </ul> <p><b>Instrument Approach Procedures</b></p> <ul style="list-style-type: none"> <li>▶ Runway 14 GPS: <ul style="list-style-type: none"> <li>▶ Straight-in (1 mile; 441 ft. AGL)</li> <li>▶ Circle-to-Land (1 mile; 475 ft. AGL)</li> </ul> </li> <li>▶ Runway 14 VOR/DME: <ul style="list-style-type: none"> <li>▶ Straight-in (1 mile; 321 ft. AGL)</li> <li>▶ Circle-to-Land (1 mile; 515 ft. AGL)</li> </ul> </li> <li>▶ Runway 32 ILS: <ul style="list-style-type: none"> <li>▶ Straight-in (1/2 mile; 200 ft. AGL)</li> <li>▶ Circle-to-Land (1 mile; 455 ft. AGL)</li> </ul> </li> <li>▶ Runway 32 GPS: <ul style="list-style-type: none"> <li>▶ Straight-in (1 mile; 491 ft. AGL)</li> <li>▶ Circle-to-Land (1 mile; 475 ft. AGL)</li> </ul> </li> <li>▶ Runway 32 VOR: <ul style="list-style-type: none"> <li>▶ Straight-in (1/2 mile; 401 ft. AGL)</li> <li>▶ Circle-to-Land (1 mile; 455 ft. AGL)</li> </ul> </li> </ul> <p><b>Communications</b></p> <ul style="list-style-type: none"> <li>▶ OTAF/UNICOM: 118.5 MHz/122.95 MHz</li> <li>▶ Santa Rosa ATCT: 118.5 MHz (7:00 am to 8:00 pm daily)</li> </ul> <p><b>Noise Abatement Procedures</b></p> <ul style="list-style-type: none"> <li>▶ Pilots requested to minimize overflight of residential areas north &amp; east of Airport as published in Noise Management Guide</li> <li>▶ Departure Noise Levels <ul style="list-style-type: none"> <li>▶ Daytime (0600-2200L): 83.2 dBA</li> <li>▶ Nighttime (2200-0600L): 72.0 dBA</li> </ul> </li> </ul>